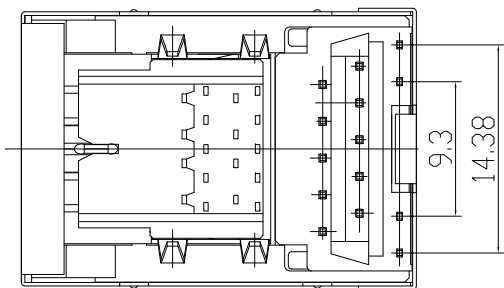
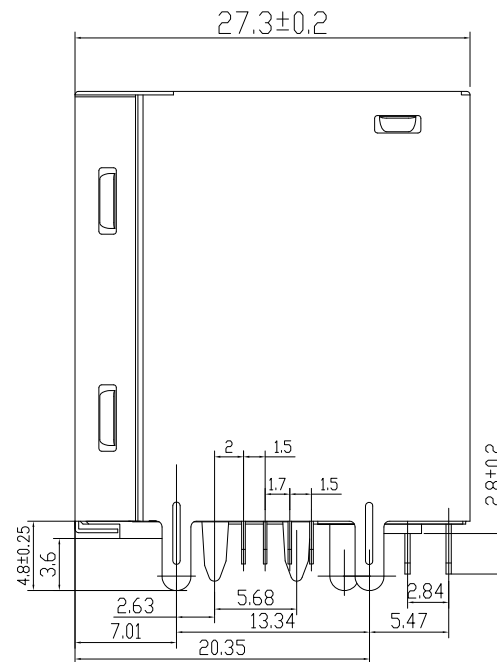
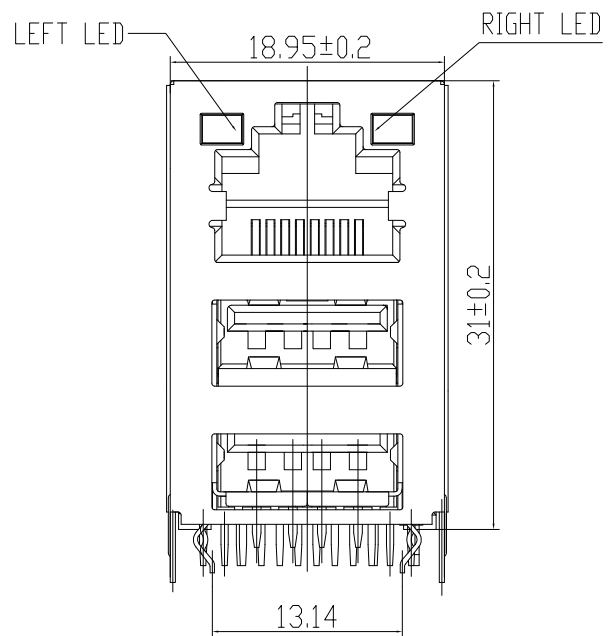


1. MECHANICAL DIMENSIONS :



MATERIAL:

HOUSING: PBT+GLASS FILLED (UL 94V-0),BLACK
 SPRING WIRE: 0.35mm THICKNESS PHOSPHOR BRONZE

ALLOY SELECTIVE GOLD PLATING OVER NICKEL
 SHIELDING: 0.25mm THICKNESS COPPER ALLOY WITH TIN PLATED
 GOLD PLATING: GOLD PATING ON CONTACT AERA
 JACK CAVITY CONFORMS TO FCC RULES AND REGULATIONS,PART 68 SUBPART F.

| REV. | ECN. NO. | DRAWN | DATE |
|------|----------|-------|------------|
| A | NEW | JOHN | 29/03/2015 |
| | | | |
| | | | |

DST-conn Tech. Co., Ltd.

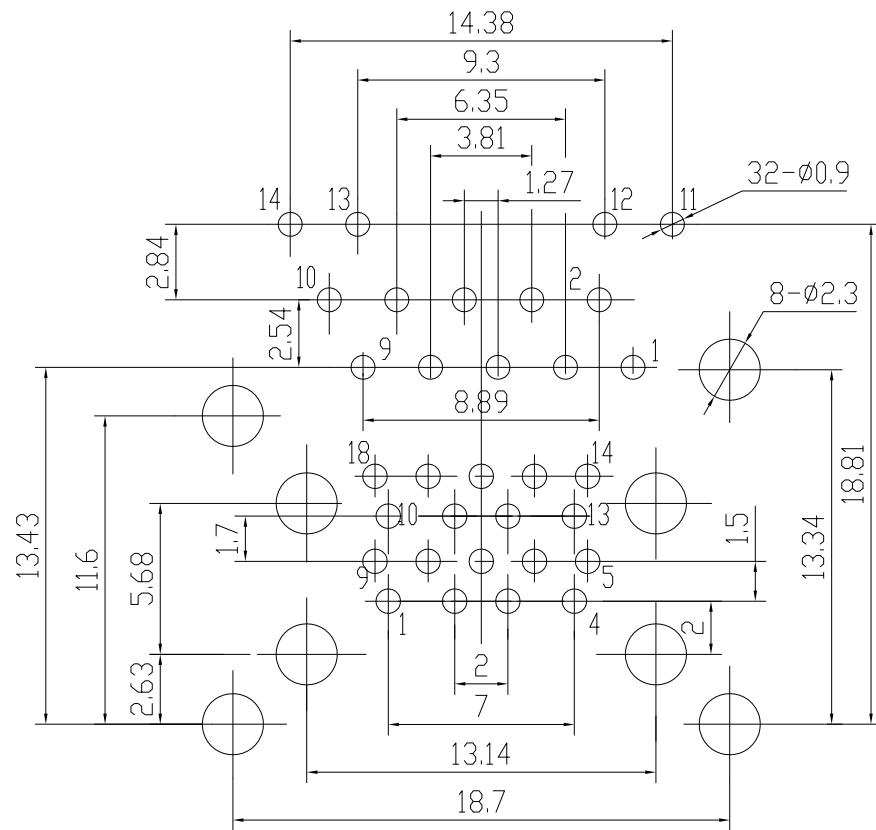


| ⊗:QUALITY CONTROL ITEM | | GENERAL TOLERANCE | | PART NO.: 11BUCD-xxxx-xxx | | |
|------------------------|--|-------------------|---------|-------------------------------|------------|------------|
| APPROVED | | .X± 0.38 | X.'± 2' | TITLE:RJ45 1X1+2 USB3.0 10P8C | | |
| CHECKED | | .XX± 0.25 | .X'± 1' | 1000MBPS W/ LED,SHELL | | |
| DRAWN | | .XXX± 0.13 | | UNIT: mm | SCALE: 1:1 | SHEET: 1/4 |
| | | | | | | REV.: A |

説明: △ :備註 ◇ :版本變更 ④ :尺寸序號 ■ :重點尺寸 ▼ :CPK尺寸

SIZE: A4

2. PCB LAYOUT :

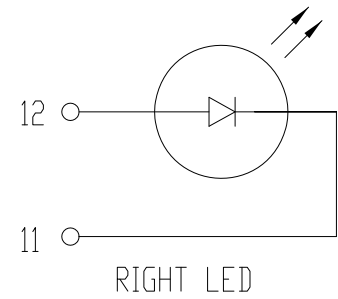
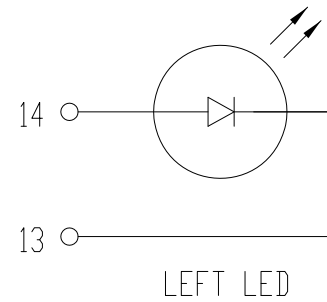


SUGGESTED PCB LAYOUT

(TOP VIEW)

DIMENSIONAL TOLERANCE: .XX \pm 0.05[0.002]

3. LED SCHEMATIC :



| REV. | ECN. NO. | DRAWN | DATE |
|------|----------|-------|------------|
| A | NEW | JOHN | 29/03/2015 |
| | | | |
| | | | |

DST-conn Tech. Co., Ltd.

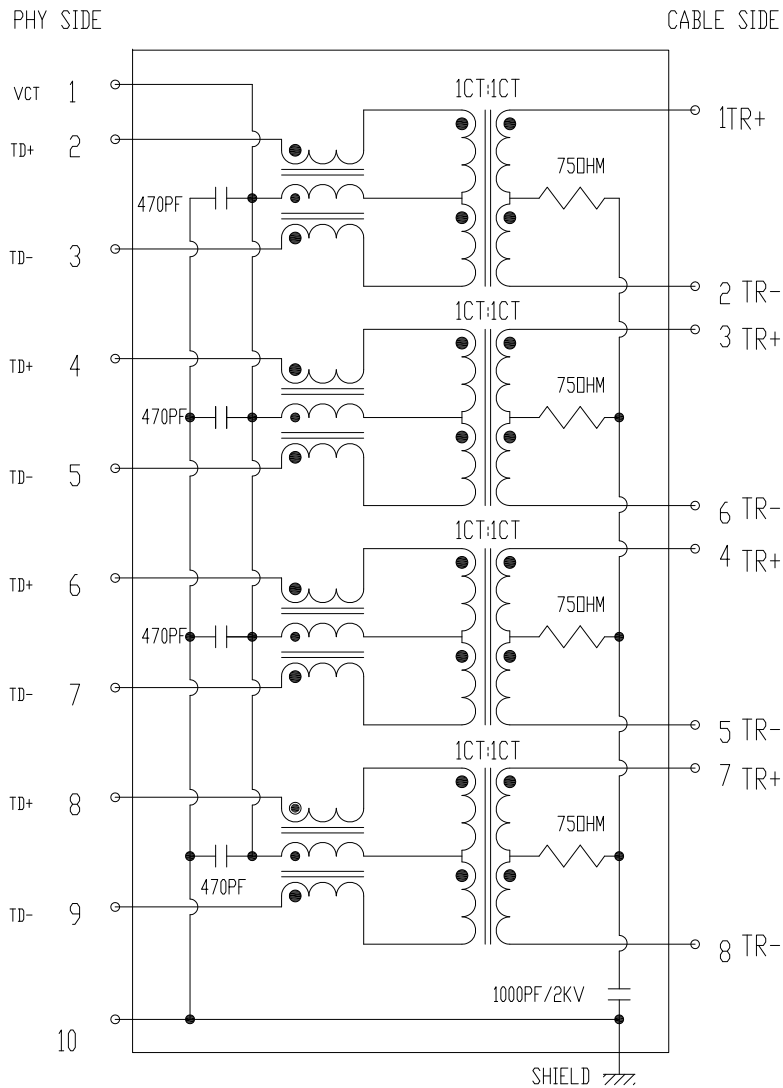


| ⊗:QUALITY CONTROL ITEM | | GENERAL TOLERANCE | PART NO.: |
|------------------------|--|-----------------------------|-------------------------------|
| APPROVED | | .X \pm 0.38 X: \pm 2' | 11BUCD-xxxx-xxx |
| CHECKED | | .XX \pm 0.25 .X' \pm 1" | TITLE:RJ45 1X1+2 USB3.0 10P8C |
| DRAWN | | .XXX \pm 0.13 | 1000MBPS W/ LED,SHELL |
| | | UNIT: mm | SCALE: 1:1 |
| | | | SHEET: 2/4 |
| | | | REV.: A |

説明: \triangle :備註 \diamond :版本變更 \textcircled{N} :尺寸序號 \blacksquare :重點尺寸 \blacktriangledown :CPK尺寸

SIZE: A4

4. SCHEMATIC :



5. ELECTRICAL CHARACTERISTICS :

ELECTRICAL SPECIFICATIONS:

TEST NOTES:(25°±5°C)

1. TR:(100KHz,0.1V); 100%

PINS:(P2,P3):(J1,J2)=1:1±3%;(P4,P5):(J3,J6)=1:1±3%

PINS:(P6,P7):(J4,J5)=1:1±3%;(P8,P9):(J7,J8)=1:1±3%

2. LX:(100KHz,100mV,8mA, DC Bias) 100%

PINS:(P2,P3),(P4,P5),(P6,P7),(P8,P9)=350uH MINIMUM

3. DCR: 100%

PINS:(J1,J2),(J3,J6),(J4,J5),(J7,J8)=1.2 OHM MAXIMUM

4. HIPOT: 100%

PINS(P2,P3)TO(J1,J2),(P4,P5)TO(J3,J6)=1500VAC FOR 60 SECONDS

PINS(P6,P7)TO(J4,J5),(P8,P9)TO(J7,J8)=1500VAC FOR 60 SECONDS

5. INSERTION LOSS:

-1.0dB MAXIMUM AT 1MHz TO 100MHz;

6.RETURN LOSS:

-18dB MINIMUM AT 1MHz TO 30MHz;

-16dB MINIMUM AT 30MHz TO 60MHz;

-12dB MINIMUM AT 60MHz TO 100MHz;

7.CROSS TALK:

-30dB MINIMUM AT 1MHz TO 100MHz

8.COMMON TO COMMON MODE REJECTION:

-30dB MINIMUM AT 1MHz TO 100MHz

| REV. | ECN. NO. | DRAWN | DATE |
|------|----------|-------|------------|
| A | NEW | JOHN | 29/03/2015 |
| | | | |
| | | | |

DST-conn Tech. Co., Ltd. **HSF** Compliant

| ⊗:QUALITY CONTROL ITEM | | GENERAL TOLERANCE | PART NO.: |
|------------------------|--|-------------------|-------------------------------|
| APPROVED | | .X±0.38 X.'±2' | 11BUCD-xxxx-xxx |
| CHECKED | | .XX±0.25 .X'±1' | TITLE:RJ45 1X1+2 USB3.0 10P8C |
| DRAWN | | .XXX±0.13 | 1000MBPS W/ LED,SHELL |
| | | UNIT: mm | SCALE: 1:1 |
| | | | SHEET: 3/4 |
| | | | REV.: A |

説明: △ :備註 ◇ :版本變更 ⑨ :尺寸序號 ■ :重點尺寸 ▼ :CPK尺寸

SIZE: A4

1 2 3 4 5 6 7 8

F

E

D

C

B

A

F

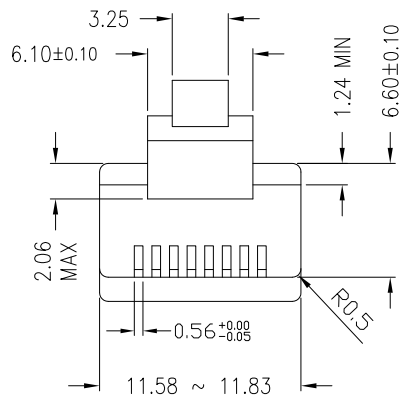
E

D

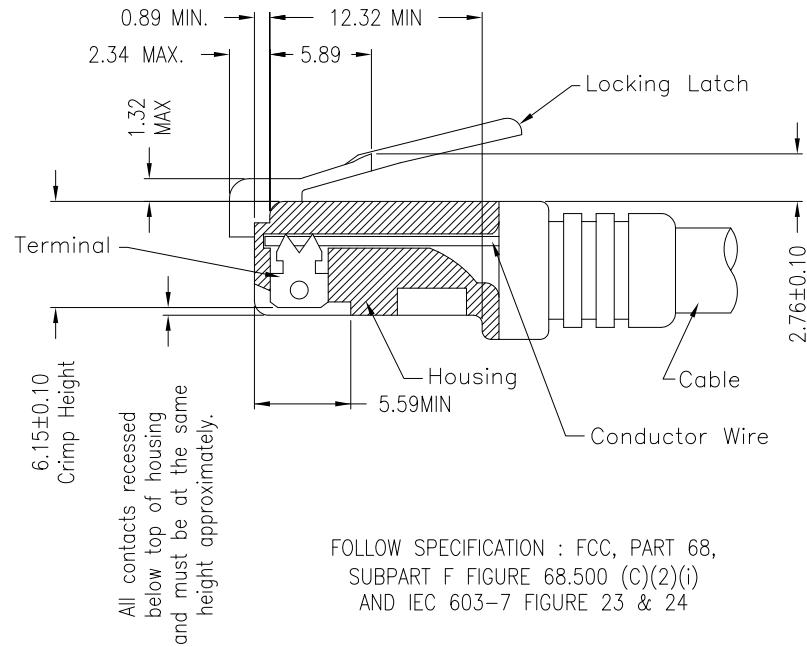
C

B

SIZE: A4

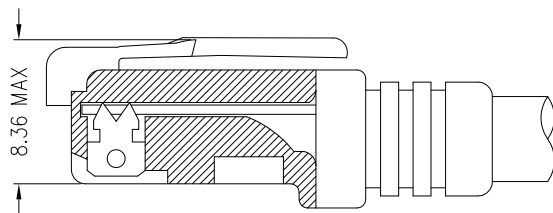


* There must be no damage to housing or locking latch. There must be no nicks or cuts in cable.
 * Durability : 750 cycles generally



FOLLOW SPECIFICATION : FCC, PART 68, SUBPART F FIGURE 68.500 (C)(2)(i) AND IEC 603-7 FIGURE 23 & 24

STANDARD MODULAR PLUG ASSEMBLY



FOLLOW SPECIFICATION : FCC, PART 68, SUBPART F FIGURE 68.500 (C)(2)(ii)

| REV. | ECN. NO. | DRAWN | DATE |
|------|----------|-------|------------|
| A | NEW | JOHN | 29/03/2015 |
| | | | |
| | | | |

DST-conn Tech. Co., Ltd. **HSF** Compliant

| | | |
|------------------------|---|-------------------------------|
| ⊗:QUALITY CONTROL ITEM | GENERAL TOLERANCE .X± 0.38 X:± 2' .XX± 0.25 .X:± 1' .XXX± 0.13 | PART NO.: 11BUCD-xxxx-xxx |
| APPROVED | | TITLE:RJ45 1X1+2 USB3.0 10P8C |
| CHECKED | | 1000MBPS W/ LED,SHELL |
| DRAWN | UNIT: mm | SCALE: 1:1 SHEET: 4/4 REV.: A |

1

2

3

説明: △ :備註 ◇ :版本變更 ④ :尺寸序號 ■ :重點尺寸 ▼ :CPK尺寸