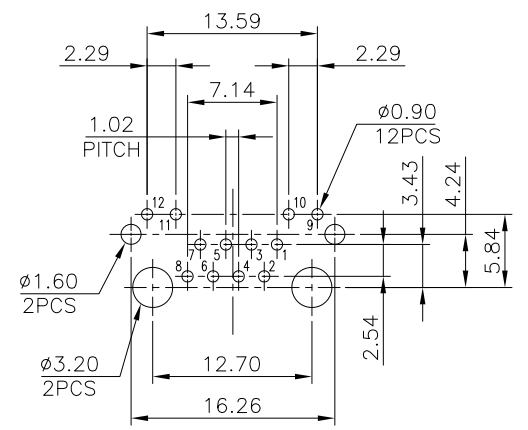
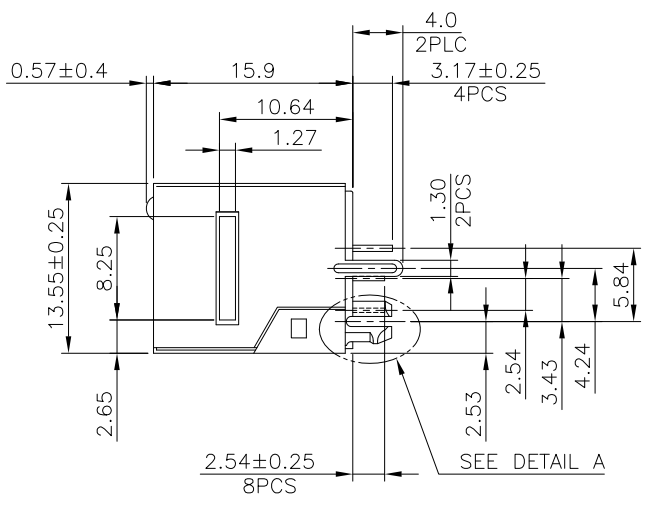
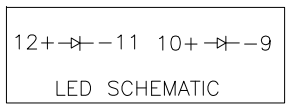
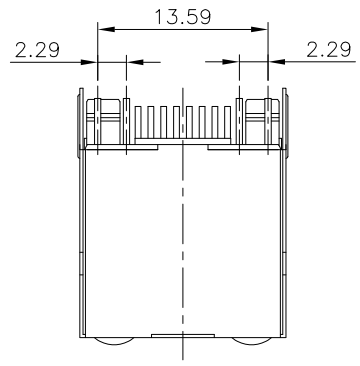


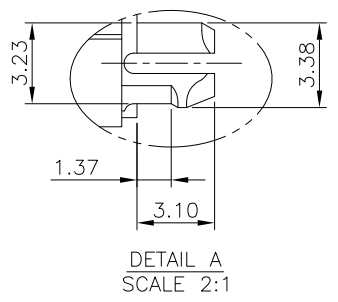
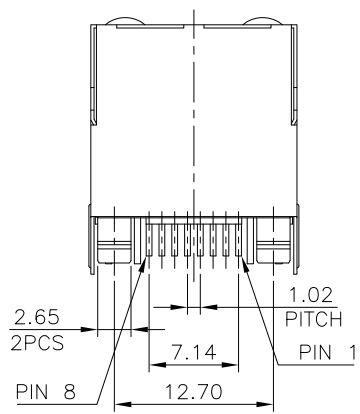
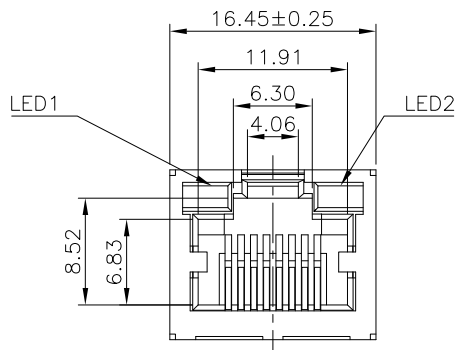
1 2 3 4 5 6 7 8

F  
E  
D  
C  
B  
A

F  
E  
D  
C  
B  
A



RECOMMENDED PCB LAYOUT  
PCB THICKNESS: 1.6mm  
TOLERANCE: ±0.05mm (TOP VIEW)

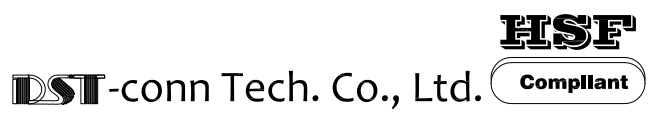


NOTE:  
CAVITY CONFIRMS TO FCC RULES AND REGULATIONS PART 68, SUBPART F.

1. MATERIAL:  
HOUSING: PA46, WITH GLASS FIBER,  
UL 94V-0, STANDARD COLOR-BLACK.  
CONTACTS: PHOSPHOR BRONZE.  
SHELL: BRASS.  
LED SOLDER TAIL: STEEL.

2. FINISH:  
CONTACTS: GOLD PLATED ON CONTACT AREA,  
2.54μm [100μ"] TIN PLATED ON SOLDER TAIL,  
WITH ENTIRE CONTACT UNDERPLATED  
1.27μm [50μ"] MIN. NICKEL  
SHELL: 0.508μm [20μ"] MIN. NICKEL PLATED.  
LED SOLDER TAIL: 2.54μm [100μ"] MIN. TIN PLATED.

REV.	ECN. NO.	DRAWN	DATE
A	NEW	JOHN	26/03/15



⊗:QUALITY CONTROL ITEM	GENERAL TOLERANCE .X± 0.38 X:± 2' .XX± 0.25 .X:± 1' .XXX± 0.13	PART NO.: 11JS87V-xxxxx
APPROVED		TITLE:RJ45 1X1 PORT 180D
CHECKED		W/ LED , SHELL 8P8C
DRAWN	UNIT: mm	SCALE: 1:1 SHEET: 1/1 REV.: A

1 2 3 4 5 6 7 8 說明: △ :備註 ◇ :版本變更 ① :尺寸序號 ■ :重點尺寸 ▼ :CPK尺寸

SIZE: A4