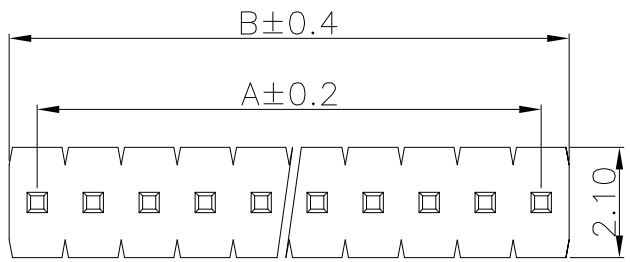


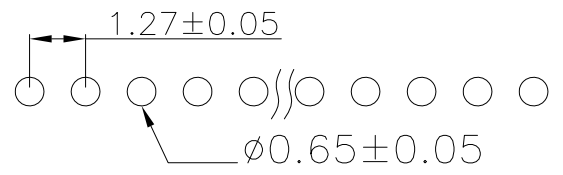
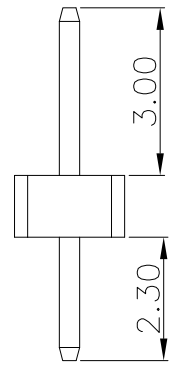
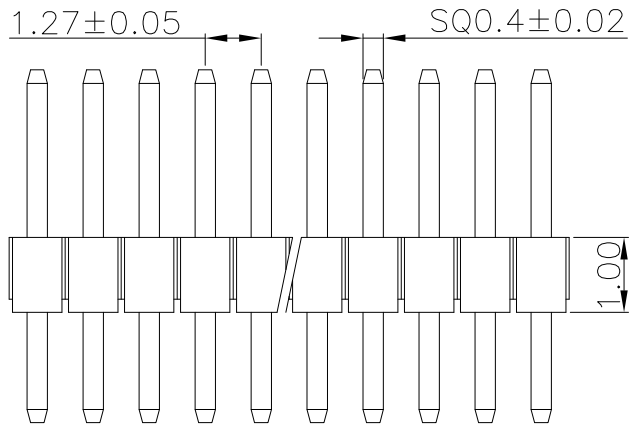
| PIN | A     | B     |
|-----|-------|-------|
| 2   | 1.27  | 2.54  |
| 3   | 2.54  | 3.81  |
| 4   | 3.81  | 5.08  |
| 5   | 5.08  | 6.35  |
| 6   | 6.35  | 7.62  |
| 7   | 7.62  | 8.89  |
| 8   | 8.89  | 10.16 |
| 9   | 10.16 | 11.43 |
| 10  | 11.43 | 12.70 |
| 11  | 12.70 | 13.97 |
| 12  | 13.97 | 15.24 |
| 13  | 15.24 | 16.51 |
| 14  | 16.51 | 17.78 |
| 15  | 17.78 | 19.05 |
| 16  | 19.05 | 20.32 |
| 17  | 20.32 | 21.59 |
| 18  | 21.59 | 22.86 |
| 19  | 22.86 | 24.13 |
| 20  | 24.13 | 25.40 |
| 21  | 25.40 | 26.67 |
| 22  | 26.67 | 27.94 |
| 23  | 27.94 | 29.21 |
| 24  | 29.21 | 30.48 |
| 25  | 30.48 | 31.75 |
| 26  | 31.75 | 33.02 |
| 27  | 33.02 | 34.29 |
| 28  | 34.29 | 35.56 |
| 29  | 35.56 | 36.83 |
| 30  | 36.83 | 38.10 |
| 31  | 38.10 | 39.37 |
| 32  | 39.37 | 40.64 |
| 33  | 40.64 | 41.91 |
| 34  | 41.91 | 43.18 |
| 35  | 43.18 | 44.45 |
| 36  | 44.45 | 45.72 |
| 37  | 45.72 | 46.99 |
| 38  | 46.99 | 48.26 |
| 39  | 48.26 | 49.53 |
| 40  | 49.53 | 50.80 |
| 41  | 50.80 | 52.07 |
| 42  | 52.07 | 53.34 |
| 43  | 53.34 | 54.61 |
| 44  | 54.61 | 55.88 |
| 45  | 55.88 | 57.15 |
| 46  | 57.15 | 58.42 |
| 47  | 58.42 | 59.69 |
| 48  | 59.69 | 60.96 |
| 49  | 60.96 | 62.23 |
| 50  | 62.23 | 63.50 |

|                |        |      |          |          |      |
|----------------|--------|------|----------|----------|------|
| RoHS Compliant | SYMBOL | REV. | REVISION | APPROVAL | DATE |
|                |        | A    | 新版圖紙     | /        | /    |



**SPECIFICATIONS**  
 CURRENT RATING: 1.0A @80°C AMBIENT  
 OPERATING TEMP RANGE: -65°C TO +125°C  
 MAX PROCESSING TEMP: NT6T: 260°C FOR 10 SECONDS  
 LCP: 260°C FOR 10 SECONDS  
 INSULATOR MATERIAL: NY6T OR LCP BLACK  
 CONTACT MATERIAL: BRASS  
 PLATING: GOLD FLASH OR OTHER  
 PART NUMBER: DH01-M x 0 xx x L27L

G: BAG  
 C: CAP + TAPE REEL  
 xx: NO. OF CONTACT  
 B: PA6T  
 E: LCP



P.C.B LAYOUT

**DST**-conn Tech. Co., Ltd.

COPYRIGHT RESERVED, PLEASE DO NOT COPY.

|              |                     |                          |       |          |       |          |            |
|--------------|---------------------|--------------------------|-------|----------|-------|----------|------------|
| PART NAME    |                     | PH P1.27 180° DIP SERIES |       | DRAWING  | Winky | DWG. No. | DH01       |
| PART NO.     |                     | DH01-Mx0xxxL27L          |       | CHECK    | Roy   | REV.     | A          |
| UNIT :<br>mm | TOLERANCE UNLESS    | X. X                     | ANGLE | APPROVAL | John  | DATE     | 2015/05/05 |
|              | OTHERWISE SPECIFIED | X. XX<br>X. XXX          |       | SCALE    | 1:1   | PAGE     | 1 OF 1     |