

F

E

D

C

B

A

RoHS Compliant

SYMBOL

REV.

REVISION

APPROVAL

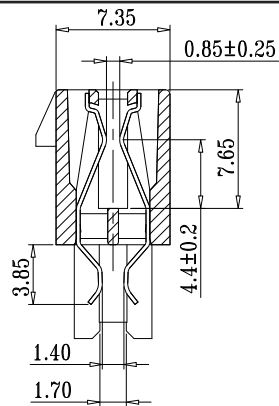
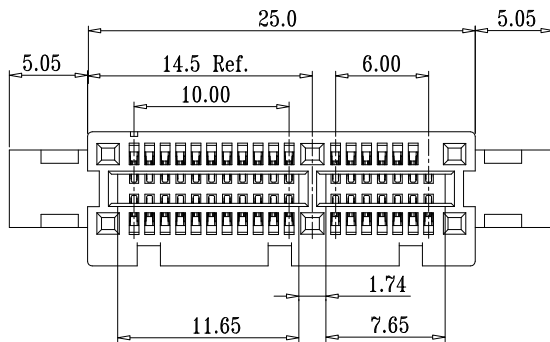
DATE

A

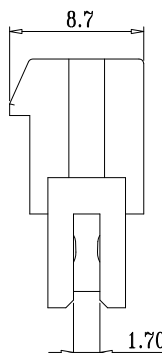
新版圖紙

Winky

2012. 09. 25



SECTION A-A



NOTES:

- Electrical characteristics:
 - Current rating: 1.1 AMP per contact;
 - Insulation resistance: 1000 Megohms at 500V DC Min;
 - Contact resistance: 30 milliohms Max (initial);
- Mechanical characteristics:
 - Insertion force: 1.15N Max per contact pair;
 - Withdrawal force: 0.15N Min per contact pair;
- Materials:
 - Housing: LCP+30% G.F,Black, UL94-V0;
 - contact: Copper Alloy, Gold plating over Nickel on contact area; Tin plating on terminal;

ORDER INFORMATION:

DI35-ED E X X 36 X X Z

Enviroment Protection:

L: RoHS

G: GP

H: Halogen-free

Packing:

E: Tube

T: Tray

G: Box

36: No. of Pins

Plating:

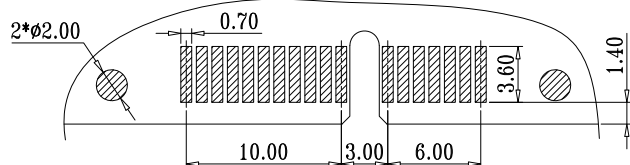
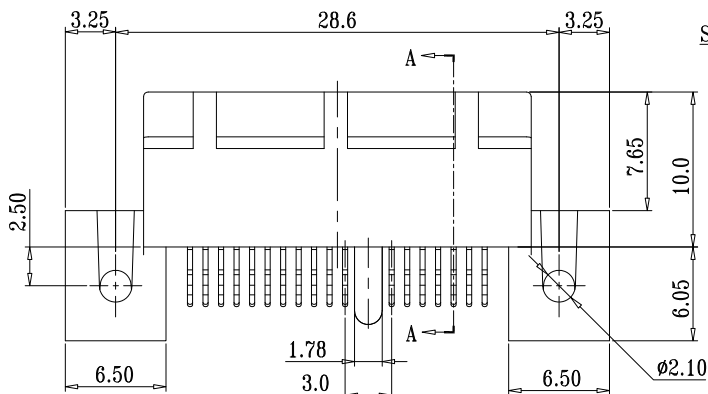
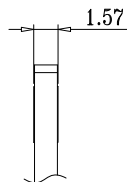
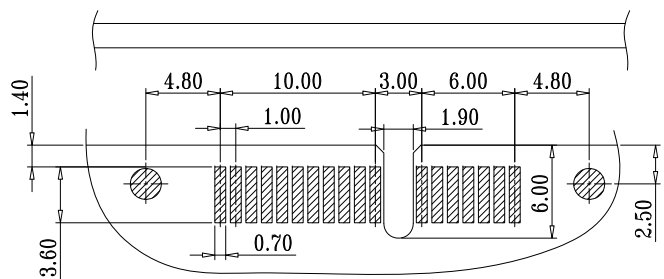
0: Flash.Gold in contact area

1: 3u" Min.Gold in contact area

2: 5u" Min.Gold in contact area

3: 10u" Min.Gold in contact area

4: 15u" Min.Gold in contact area

RECOMMENDED PCB LAYOUT
TOLERANCE: ±0.05

DST-conn Tech. Co., Ltd.

COPYRIGHT RESERVED, PLEASE DO NOT COPY.

PART NAME PCIe 36P Slot, 夹板式 带 镭丝孔和定位柱

DRAWING

Winky

DWG. No.

DI35

PART NO.

DI35-EDExx36xxZ

CHECK

Roy

REV.

A

UNIT :
mmTOLERANCE UNLESS
OTHERWISE SPECIFIEDX. X ±0.30
X. XX ±0.20
X. XXX ±0.10ANGLE
±2°

APPROVAL

John

DATE

2012. 09. 25

SCALE

1:1

PAGE

1 OF 1

F

E

D

C

B

A