

RoHS Compliant

SYMBOL

REV.

REVISION

APPROVAL

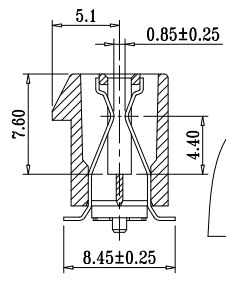
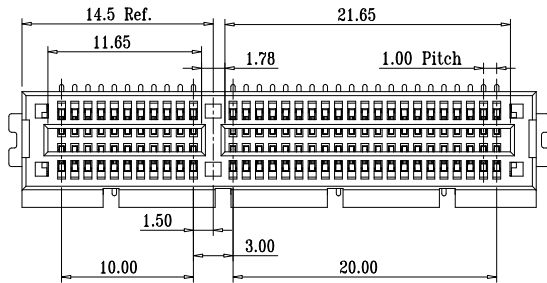
DATE

A

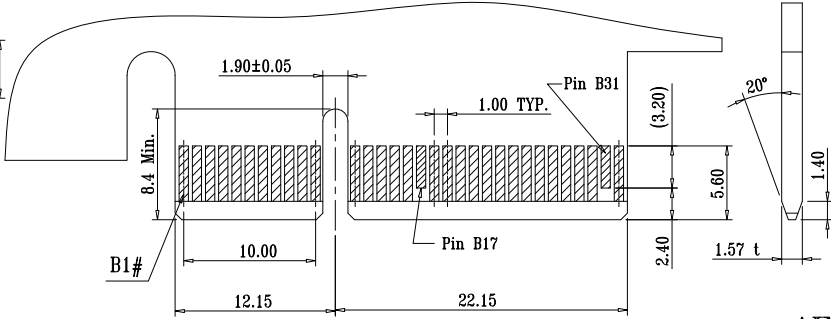
新版圖紙

Winky

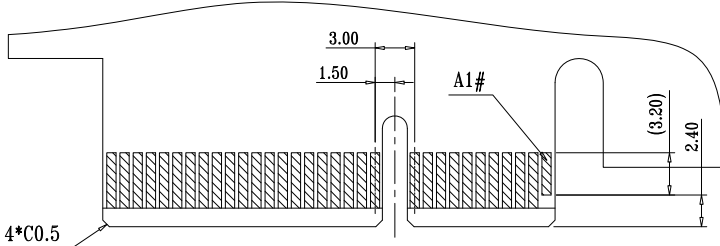
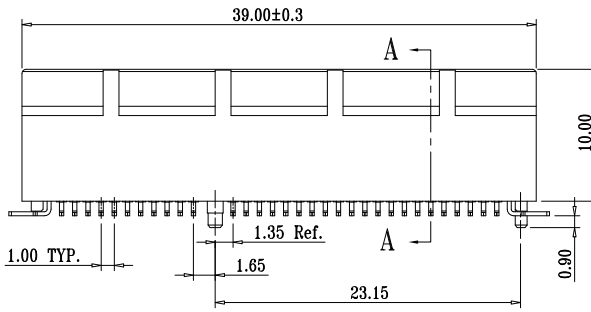
2014.05.27



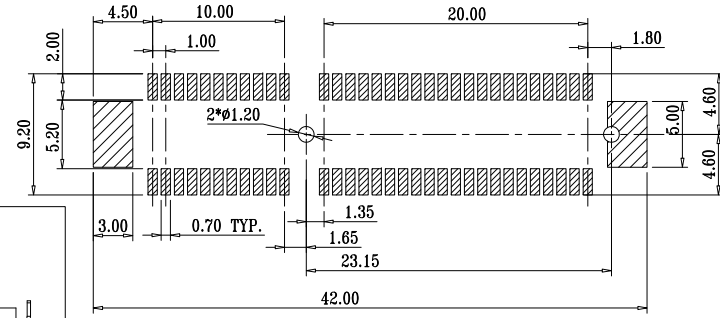
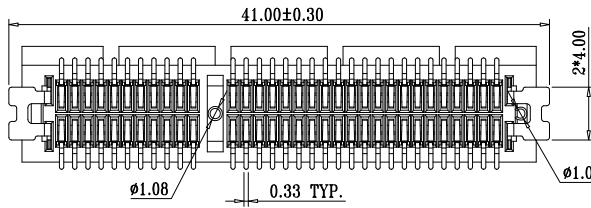
SECTION A-A



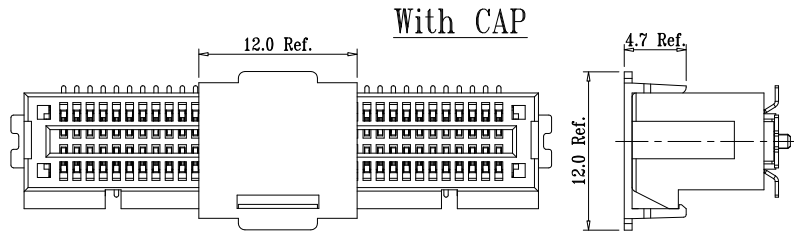
RECOMMENDED EDGE CARD PATTERN (PRIMARY SIDE)



RECOMMENDED EDGE CARD PATTERN (SECONDARY SIDE)



RECOMMENDED PCB LAYOUT (COMPONENT SIDE) TOLERANCE: ±0.05



***Material:**

- 1.Housing: LCP+30% G/F, UL94V-0, COLOR: BLACK.;
- 2.Terminal: Copper Alloy,T=0.25mm; Plating: Gold in contact area; 100u" Min Tin in solder area; 50u" MIN.NICKEL UNDERPLATING OVER ALL.
- 3.Latch: Copper Alloy,T=0.30mm; Plating: NICKEL UNDERPLATING OVER ALL.

***Electrical Characteristics:**

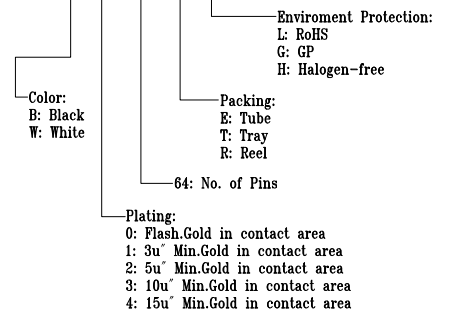
- 1:Contact Resistance: 30mΩ Max.
- 2:Insulation Resistance: 1000MΩ Min.
- 3:Dielectric Strength: 500V DC/1MIN.
- 4.Contact Current rating: 1.1 A Per Pin Min.

***Mechanical Characteristics:**

- 1:Insertion Force: 1.15N per contact pair Max.
- 2:Extraction Force: 0.15N per contact pair Min.
- 3.Durability rating:50 Cycles

ORDER INFORMATION:

DI36-EL E x x 64 x xZ



DST-conn Tech. Co., Ltd.

COPYRIGHT RESERVED, PLEASE DO NOT COPY.

PART NAME	PCIe 64P Vertical SMT type with Latch	DRAWING	Winky	DWG. No.	DI36	
PART NO.	DI36-ELExx64xxZ	CHECK	Roy	REV.	A	
UNIT : mm	TOLERANCE UNLESS	X. X ±0.38	APPROVAL	John	DATE	2014.05.27
	OTHERWISE SPECIFIED	X. XX ±0.25 X. XXX ±0.10				
		ANGLE	SCALE	1:1	PAGE	1 OF 1