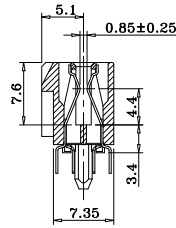
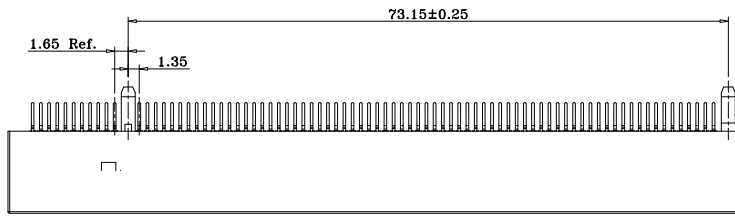
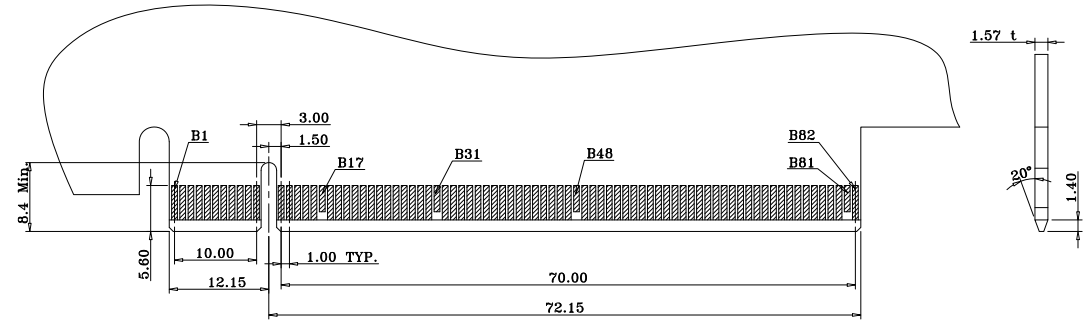
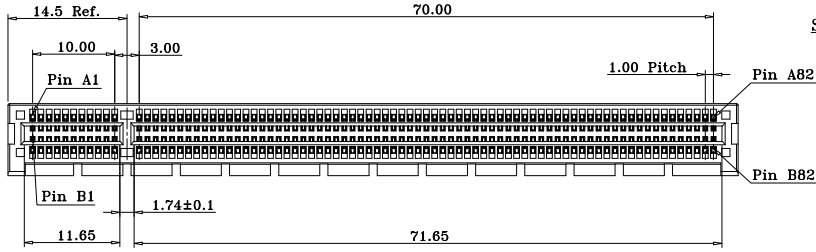


RoHS Compliant

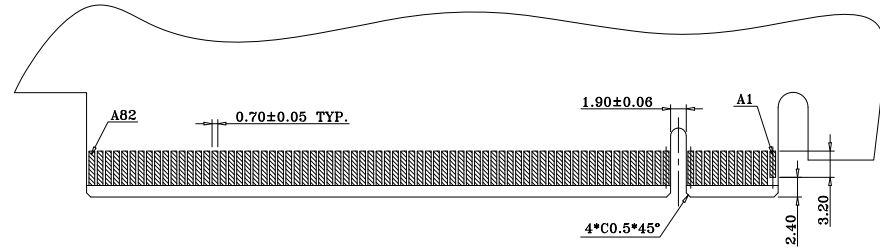
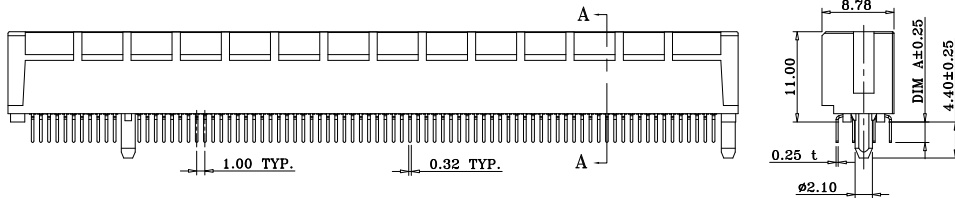
SYMBOL	REV.	REVISION	APPROVAL	DATE
	A	新版圖紙	Winky	2014. 12. 30



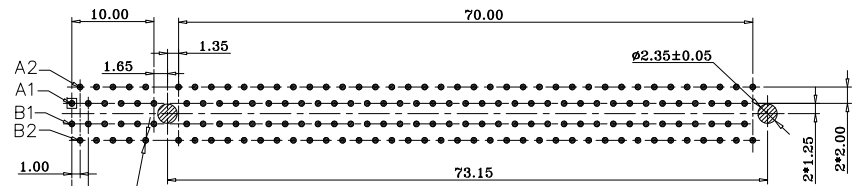
SECTION A-A



RECOMMENDED EDGE CARD PATTERN (PRIMARY SIDE)



RECOMMENDED EDGE CARD PATTERN (SECONDARY SIDE)



RECOMMENDED PCB LAYOUT (COMPONENT SIDE)
TOLERANCE: ±0.05

ORDER INFORMATION:
DI44-EVExx164xxZx

Color:
B: Black
W: White

DIM A:
1: DIP=2.50mm
2: DIP=3.00mm

Environment Protection:
L: RoHS
G: GP
H: Halogen-free

Plating:
0: Flash.Gold in contact area
1: 3u" Min.Gold in contact area
2: 5u" Min.Gold in contact area
3: 10u" Min.Gold in contact area
4: 15u" Min.Gold in contact area

Packing:
E: Tube
T: Tray
G: Box

164: No. of Pins

***Material:**

- 1.Housing: LCP,UL94 V-0,Color:Black
- 2.Terminal: Brass C2680 EH,T=0.25mm;
Plating: Gold Plated on contact area;
MATTE Sn on solder area;
NICKEL UNDERPLATING OVER ALL.

***Electrical Characteristics:**

- 1:Contact Resistance: 30mΩ Max.
- 2:Insulation Resistance: 1000MΩ Min.
- 3:Dielectric Strength: 500V DC/1MIN.
- 4:Contact Current rating: 1.1 A Per Pin Min.

***Mechanical Characteristics:**

- 1:Insertion Force: 1.15N per contact pair Max.
- 2:Extraction Force: 0.15N per contact pair Min.
- 3.Durability rating: 50 Cycles

DST-conn Tech. Co., Ltd.

PART NAME	PCIe 164Pin Slot with Post	DRAWING	Winky	DWG. No.	DI44
PART NO.	DI44-EVExx164xxZx	CHECK	Roy	REV.	A
UNIT :	TOLERANCE UNLESS	APPROVAL	John	DATE	2014. 12. 30
mm	OTHERWISE SPECIFIED	SCALE	1:1	PAGE	1 OF 1
	X. X ±0.38 X. XX ±0.25 X. XXX ±0.15	ANGLE			
		±2°			

COPYRIGHT RESERVED, PLEASE DO NOT COPY.