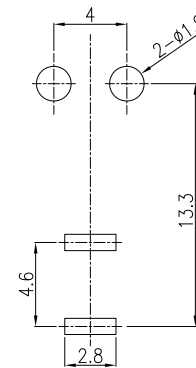
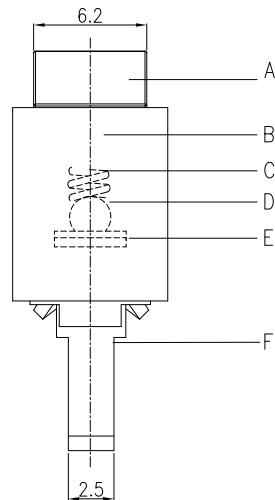
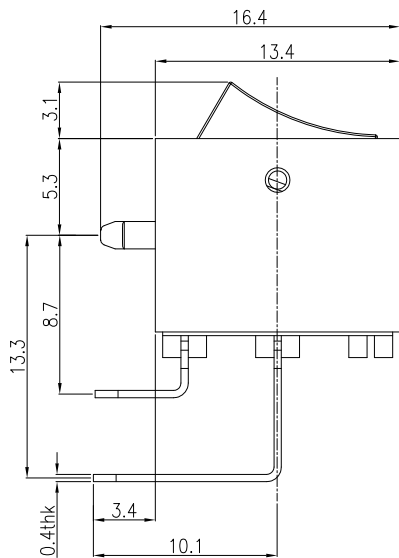
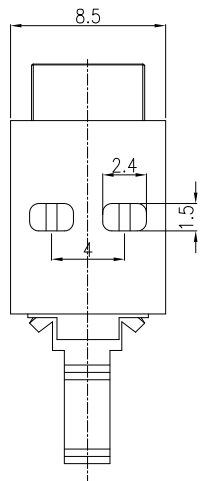
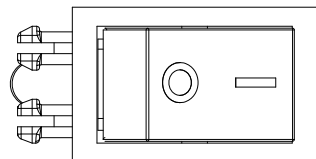
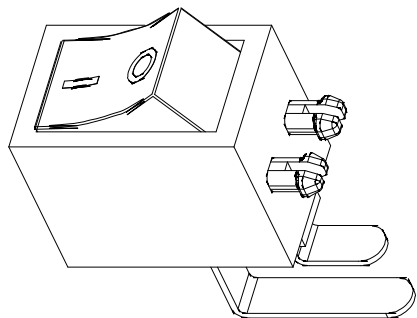


RoHS Compliant

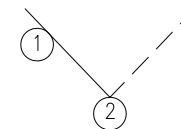
| SYMBOL | REV. | REVISION | APPROVAL | DATE |
|--------|------|----------|----------|------------|
| | A | 新版圖紙 | Winky | 2014/06/26 |

SPECIFICATIONS

1. ELECTRICAL CHARACTERISTICS:
 - 1-1. RATING: AC 3A 250V / AC 6A 125V
 - 1-2. CONTACT RESISTANCE: 20mΩ MAX(INITAL)
 - 1-3. DIELECTRIC WITHSTANDING VOL TAGE: 1500V AC FOR ONE MINUTE
 - 1-4. INSULATION RESISTANCE: 1000MΩ MIN, MEASURED BY 500V DC
2. LIFE TEST:
 - 2-1. ELECTRONICS LIFE TEST 10,000 CYCLES.
 - 2-2. MECHANICAL LIFE TEST 10,000 CYCLES.
3. TEMPERATURE RISE : 30°C MAX



P. C. B LAYOUT



CIRCUIT

| No. | DESCRIPTION | MATERIAL | PLATING |
|-----|-------------|------------|-----------|
| A | KNOB | PA66 94V-0 | BLACK |
| B | HOUSING | PA66 94V-0 | BLACK |
| C | SPRING | SUS | NATURAL |
| D | BALL | SUS | NI PLATED |
| E | CONTACT | C2680 | SN PLATED |
| F | TERMINAL | C2680 | SN PLATED |

DST-conn Tech. Co., Ltd.

COPYRIGHT RESERVED, PLEASE DO NOT COPY.

| PART NAME | | ROCKER SWITCH | | DRAWING | | Winky | | DWG. No. | |
|-----------|--------|---------------------|-------------------------|---------|----------|-------|------|------------|--|
| PART NO. | | DI46-HDIBS02GLSB | | CHECK | | Roy | | REV. | |
| | UNIT : | TOLERANCE UNLESS | X. X ± 0.10 | ANGLE | APPROVAL | John | DATE | 2014/06/26 | |
| | | OTHERWISE SPECIFIED | X.XX ± 0.05 X ± 0.20 | | SCALE | 1:1 | PAGE | 1 OF 1 | |