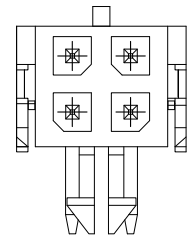
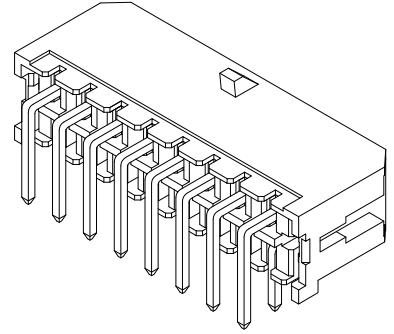
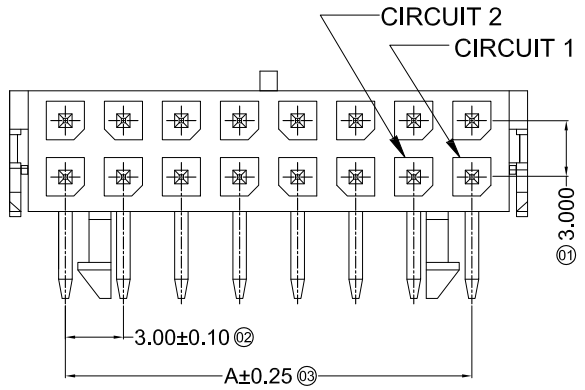


RoHS Compliant

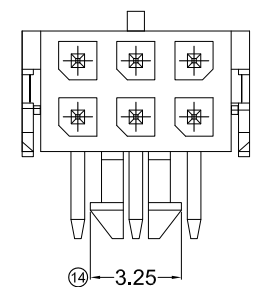
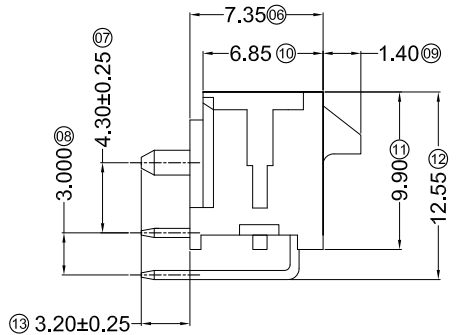
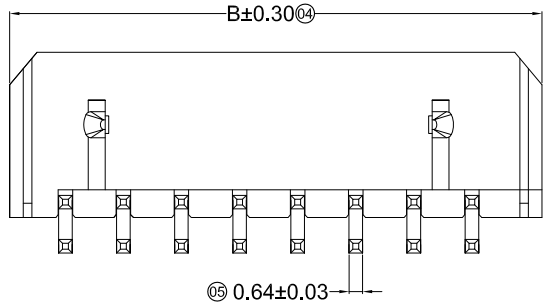
SYMBOL	REV.	REVISION	APPROVAL	DATE
	A	新版圖紙	Winky	2014.10.18

Specifications :

- Voltage rating: 250V AC / DC
- Current rating: 5A AC / DC
- Withstanding voltage: 1000V AC/minute
- Temperature range: -25°C~+85°C
- Insulation resistance: ≥1000MΩ
- Contact resistance: ≤10mΩ
- After environmental testing: ≤20mΩ



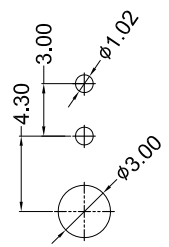
2*02P



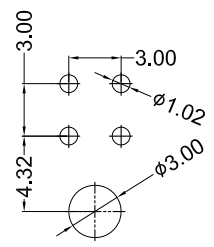
2*03P

DP02 - D I x xx TL30W
 ① ② ③ ④ ⑤

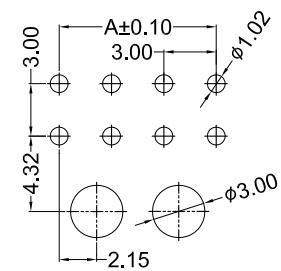
- ① Series No.
- ② Welding Board Angle&Way: D: DIP 90°
- ③ Material: I: PA66 94V-0
- ④ Planting Category: B: Bright tin plating 70u"
 0: All Gold-Plated 2u" G: Gold-Plated Contact 2u"
- ⑤ Row No.-Pin No.: xx: 02P~24P



2P P.C.B LAYOUT



4P-6P P.C.B LAYOUT



8P-24P P.C.B LAYOUT

Poles	Dimensions (mm)		Poles	Dimensions (mm)	
	A	B		A	B
02	--	6.65	14	18.00	24.65
04	3.00	9.65	16	21.00	27.65
06	6.00	12.65	18	24.00	30.65
08	9.00	15.65	20	27.00	33.65
10	12.00	18.65	22	30.00	36.65
12	15.00	21.65	24	33.00	39.65

DP02-DI0xxTL30W	PA66 UL 94V-0	Brass	Gold-Flash	DP02-H
DP02-DIBxxTL30W	PA66 UL 94V-0	Brass	Tin-Plated	DP02-H
Part No.	Material	Material(Pin)	Finish(Pin)	Mates With Housing

DST-conn Tech. Co., Ltd.

COPYRIGHT RESERVED, PLEASE DO NOT COPY.

PART NAME	3.00 mm Crimp Style Connectors	DRAWING	Winky	DWG. No.	DP02		
PART NO.	DP02-DIxxxTL30W	CHECK	Roy	REV.	A		
UNIT : mm	TOLERANCE UNLESS OTHERWISE SPECIFIED	X.X ±0.30	ANGLE ±2°	APPROVAL	John	DATE	2014.10.18
		X.XX ±0.20		SCALE	1:1	PAGE	1 OF 1
		X.XXX ±0.10					