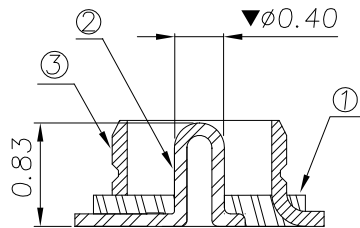
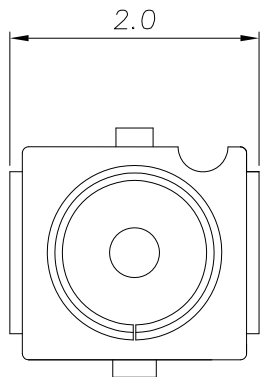


RoHS Compliant

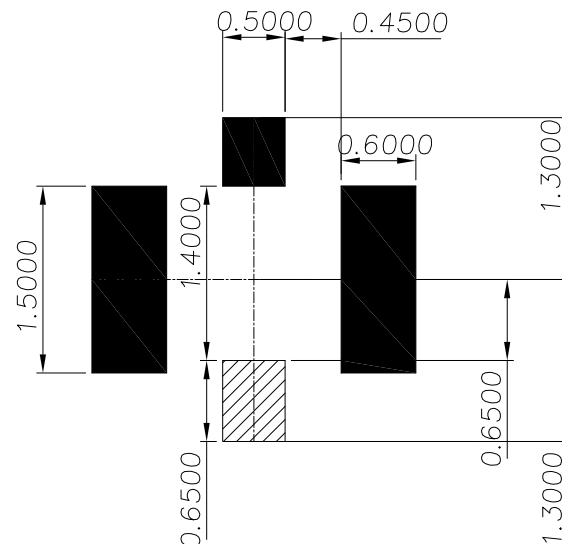
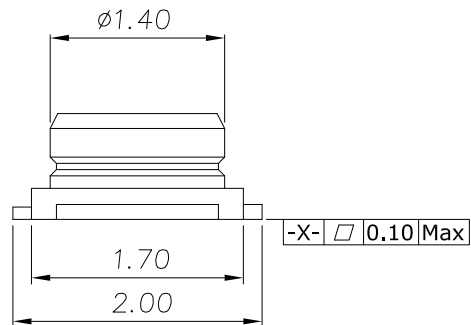
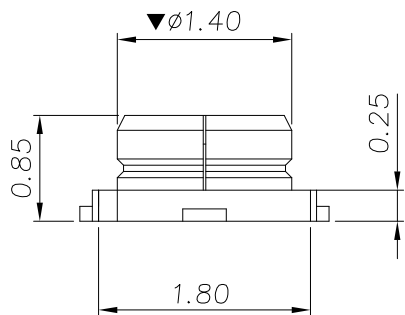
SYMBOL	REV.	REVISION	APPROVAL	DATE
	A	新版圖紙	Winky	2015.05.05

NOTE: UNLESS OTHERWISE SPECIFIED

1. DIMENSION SHALL BE INTERPRETED PER ANSI Y14.5M-1994.
2. DIMENSION MARKED WITH "▼" SHOULD SPECIFIED ON INSPECTION PLAN.
3. CONTACT RETENTION FORCE: 0.2 N MIN.
4. CONTACT MATERIAL: COPPER ALLOY.
5. INSULATOR: HIGH TEMPERATURE PLASTIC UL94 V-0.
6. CENTRE CONTACT FINISH: GOLD FLASH 1-3u" , OUTER CONTACT FINISH: GOLD FLASH . ALL OVER 50u" NICKEL MIN. UNDER PLATED.
7. LOW PROFILE: 1.5MM MAX. MATING HEIGHT.
8. APPLICATION FREQUENCY UP TO 6 G HZ.

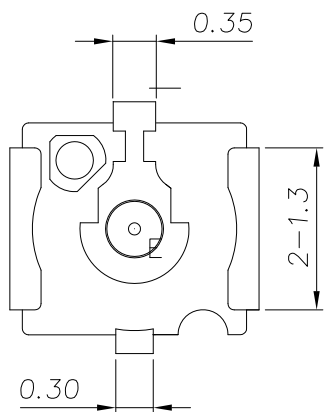


A ---A



■ GROUND PAD

RECOMMENDED PCB LAYOUT



3	DR03-004	METAL SHELL, COPPER ALLOY, GOLD FLASH	1
2	DR03-003	CENTER PIN, COPPER ALLOY, GOLD FLASH	1
1	DR03-002	OVER MOLD HOUSING, LCP, IVORY, UL94V-0	1
ITEM	PART NUMBER	DESCRIPTION	Q'TY

DST-conn Tech. Co., Ltd.

COPYRIGHT RESERVED, PLEASE DO NOT COPY.

PART NAME		RF CONN		DRAWING	Winky	DWG. No.	DR03
PART NO.		DR03-LE0040RLI		CHECK	Roy	REV.	A
	UNIT :	TOLERANCE UNLESS	X. X ±0.30	ANGLE	APPROVAL	DATE	2015.05.05
	mm	OTHERWISE SPECIFIED	X. XX ±0.20 X. XXX ±0.10				