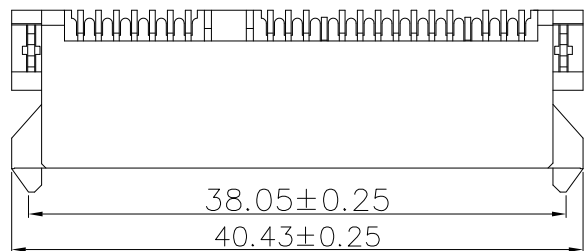


RoHS Compliant

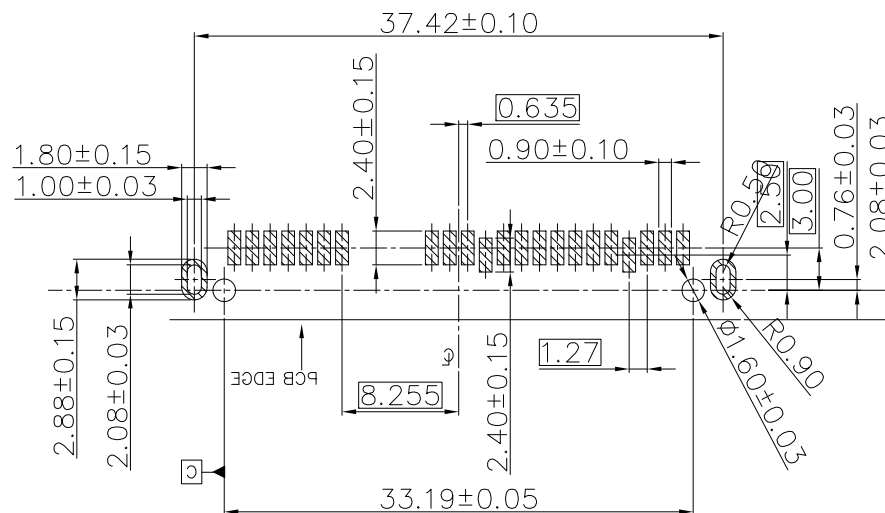
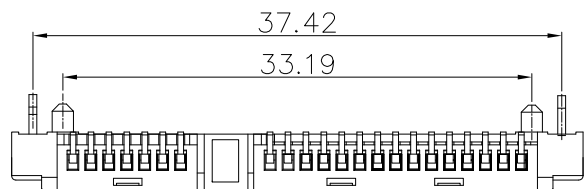
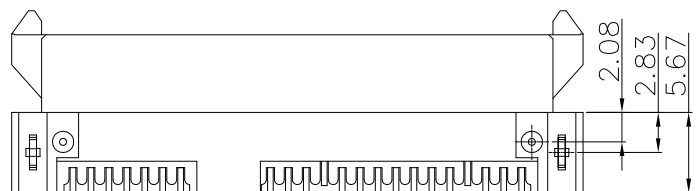
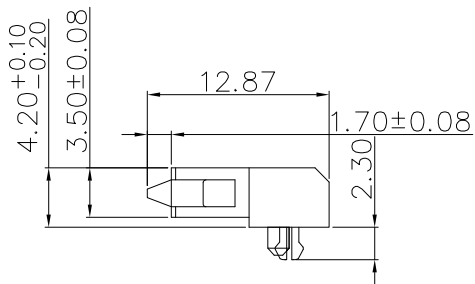
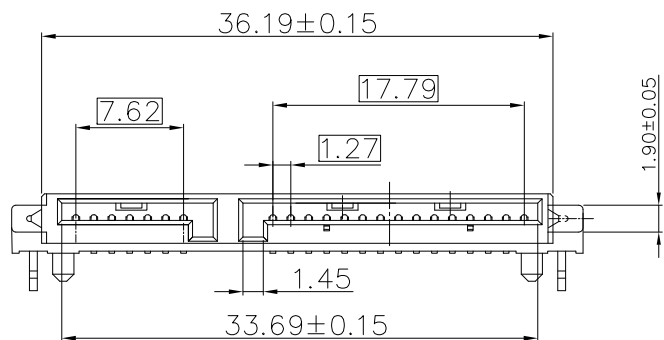
SYMBOL	REV.	REVISION	APPROVAL	DATE
	A	新版圖紙	Winky	2015. 04. 17



NOTE:
DS01-ME X 22TL42T

Contact Plating:
0: G/F
1: 3u"
3: 10u"
4: 15u"
5: 30u"

SPECIFICATION:
1. MATERIAL:
HOUSING: LCP UL 94V-0
COLOR: BLACK
CONTACT: PHOSPHOR BRONZE
PEG: BRASS
2. FINISH:
CONTACT: GOLD PLATING ON CONTACT AREA
100u" MIN TIN-LEAD PLATING ON SOLDER TAILS,
50u" MIN NICKEL UNDERPLATING OVER ALL.
PEG: 100u" MIN TIN-LEAD PLATING ON SOLDER TAILS,
50u" MIN NICKEL UNDERPLATING OVER ALL.



RECOMMEND PCB LAYOUT (T=1.2)
PCB TOLERANCE: ±0.05

DST-conn Tech. Co., Ltd.

COPYRIGHT RESERVED, PLEASE DO NOT COPY.

PART NAME		SATA 7+15P SMT TYPE H=4.2 mm LCP		DRAWING		Winky		DWG. No.		DS01	
PART NO.		DS01-MEX22TL42T		CHECK		Roy		REV.		A	
UNIT :	TOLERANCE UNLESS OTHERWISE SPECIFIED	X. X	±0.38	ANGLE	APPROVAL	John	DATE	2015. 04. 17	PAGE	1 OF 1	
		X. XX	±0.25								
mm		X. XXX	±0.13								

F E D C B A