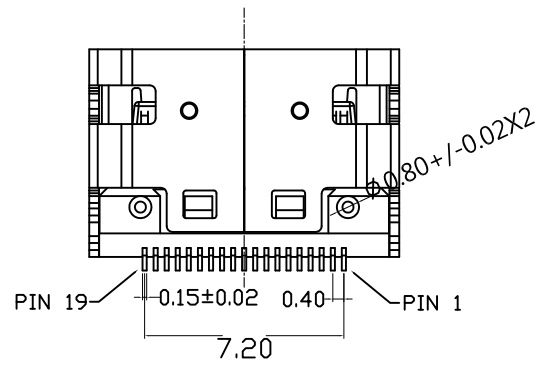
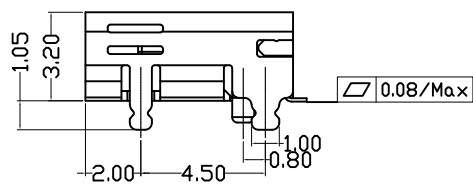
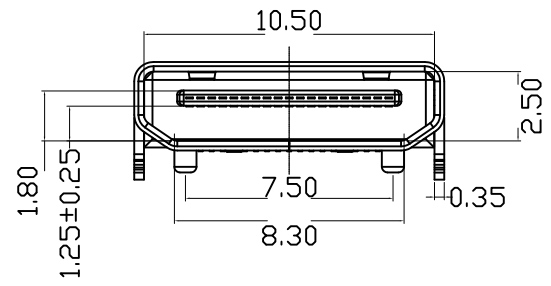
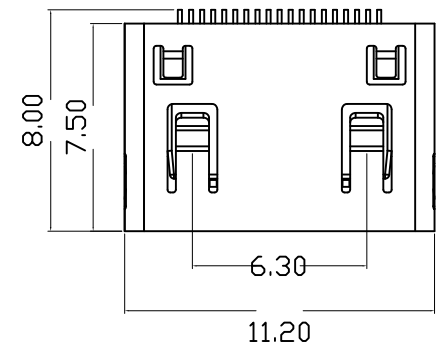


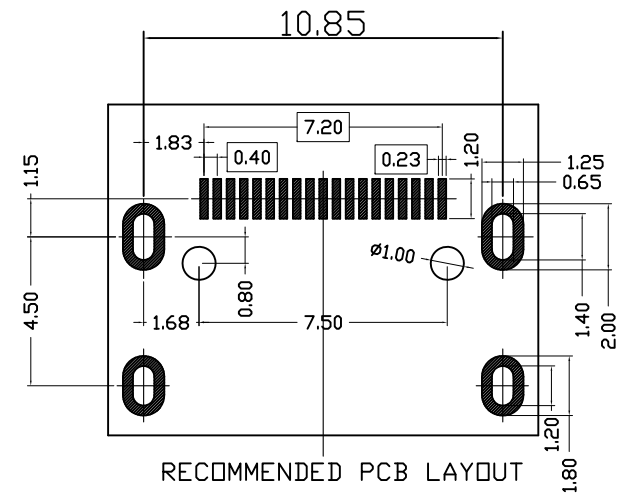
RoHS Compliant

SYMBOL	REV.	REVISION	APPROVAL	DATE
	A	新版圖紙	Winky	2014/07/10



Note:  
 1. Material:  
 Housing: LCP(E130I)+30% GF. (UL94V-0), BLACK.  
 Terminal: Brass C2680, T=0.10±0.01mm.  
 Shell: Brass C2680-H, T=0.25±0.02mm.  
 2. Plated:  
 Terminal: Selective Au on contact area.  
 100u" MIN. Sn on solder tail area,  
 Both over 50u" MIN. Ni under plated overall  
 Shell: Nickel 50u" MIN plated.

Specification:  
 1. Mating Force: 44.1n Max  
 2. Unmating Force: 7-25n  
 3. Durability: 5000 Cycles Min  
 4. Current: 0.5a  
 5. Voltage: 40v Max  
 6. Withstanding Voltage: 500v Ac Min. (Unmated)  
 7. Contact Resistance: 30mΩ Max.  
 8. Insulation Resistance: 100mΩ Min. (Unmated)  
 9. Operating Temperature Range: -20.C To +85.C  
 10. All The Material Should Comply With The ROHS Requirement.



**DST**-conn Tech. Co., Ltd.

COPYRIGHT RESERVED, PLEASE DO NOT COPY.

PART NAME		HDMI Socket C Type SMT		DRAWING		Winky		DWG. No.		DU01		
PART NO.		DU01-HMEB019RLM		CHECK		Roy		REV.		A		
UNIT : mm	TOLERANCE UNLESS OTHERWISE SPECIFIED		X. X X. XX X. XXX		ANGLE		APPROVAL		DATE		2014/07/10	
					±2°		SCALE		PAGE		1 OF 1	