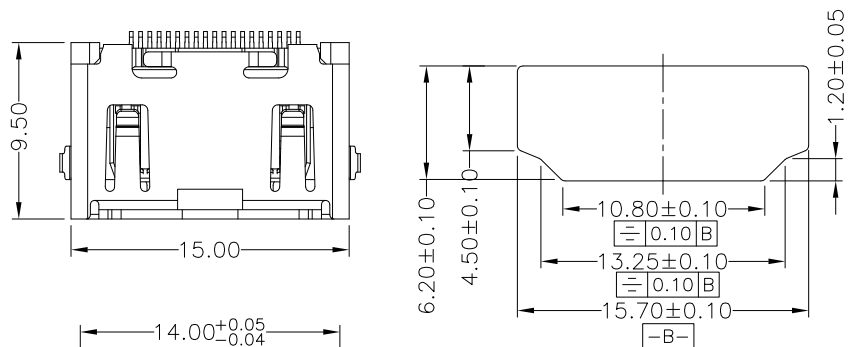


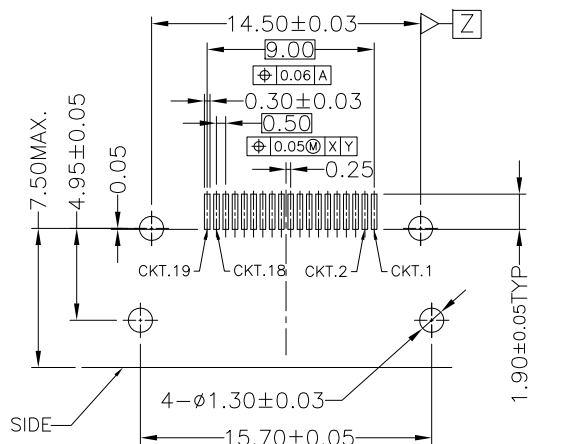
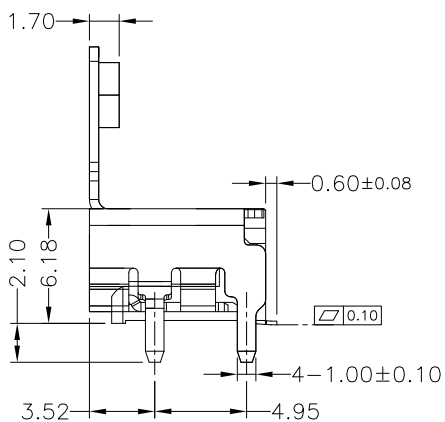
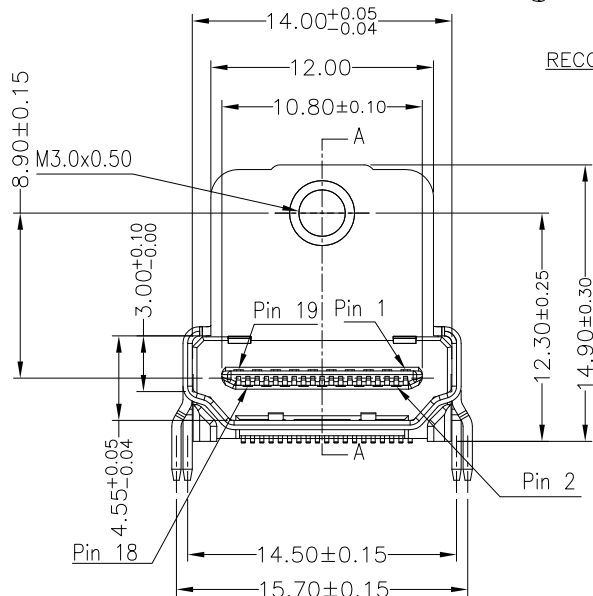
RoHS Compliant

SYMBOL	REV.	REVISION	APPROVAL	DATE
	A	新版圖紙	Winky	2014.02.15

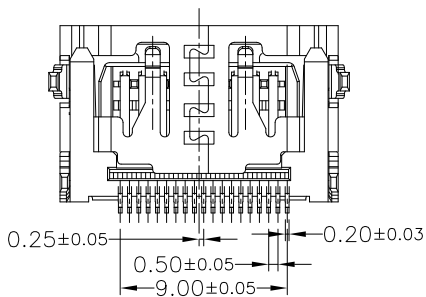
NOTE:
 1..MECHANICAL CHARACTERISTICS
 INSERTION FORCE: 44.1N MAX
 EXTROCTION FORCE: 9.8N MIN, 39.2N MAX
 MATING CYCLE:10000 CYCLES
 2.ELECTRICAL CHARACTERISTICS
 RATING CURRENT: 0.5A
 RATING VOLTAGE: 40V
 CONTACT RESISTANCE: 30 MILLOHMS OHMS MAX
 INSULATION RESISTANCE:100M OHMS MIN
 DIELECTRIC WITHSTANDING VOLTAGE: 300V AC/1MINUTE
 OPERATING TEMPERATURE: -20°C---+85°C
 STORAGE TEMPERATURE: -20°C---+65°C



RECOMMENDED PANEL CUT OUT DIMENSION



Reconnened PCB Lay-out Connector side
(General Tolerance:+/-0.05)



3	Terminal	Copper Alloy T=0.25mm	Contact Area: Au 1u" G/F Solder-tail Area: Sn 80u" Under-Plating: Ni 30u"
2	Shell	Copper Alloy T=0.50mm	Over-Plating: Ni 40u"
1	Housing	LCP+30%G.F., UL 94V-0	Color:Black
ITEM	DESC	MATERIAL	REMARKS

DST-conn Tech. Co., Ltd.

COPYRIGHT RESERVED, PLEASE DO NOT COPY.

PART NAME		HDMI A/F/SMT/With FLANGE		DRAWING		Winky		DWG.No.		DU17	
PART NO.		DU17-HMEB019RLV		CHECK		Roy		REV.		A	
UNIT :		TOLERANCE UNLESS		X.X ±0.30		ANGLE		APPROVAL		John	
mm		OTHERWISE SPECIFIED		X.XX ±0.20		±2°		SCALE		1:1	
				X.XXX ±0.10				PAGE		1 OF 1	

F E D C B A