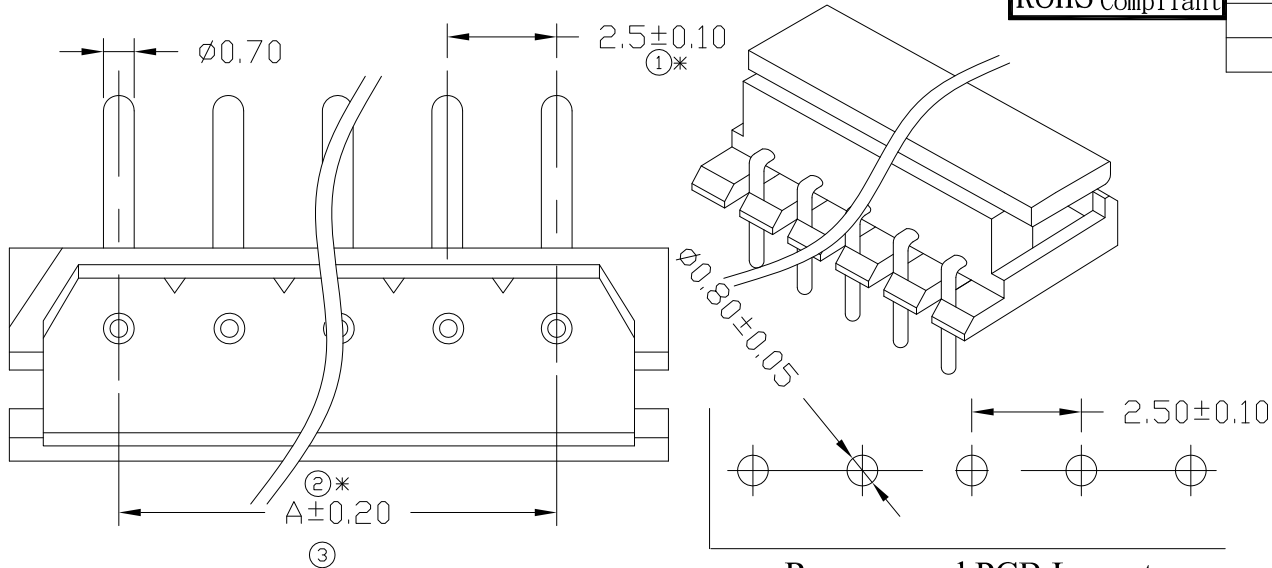


RoHS Compliant

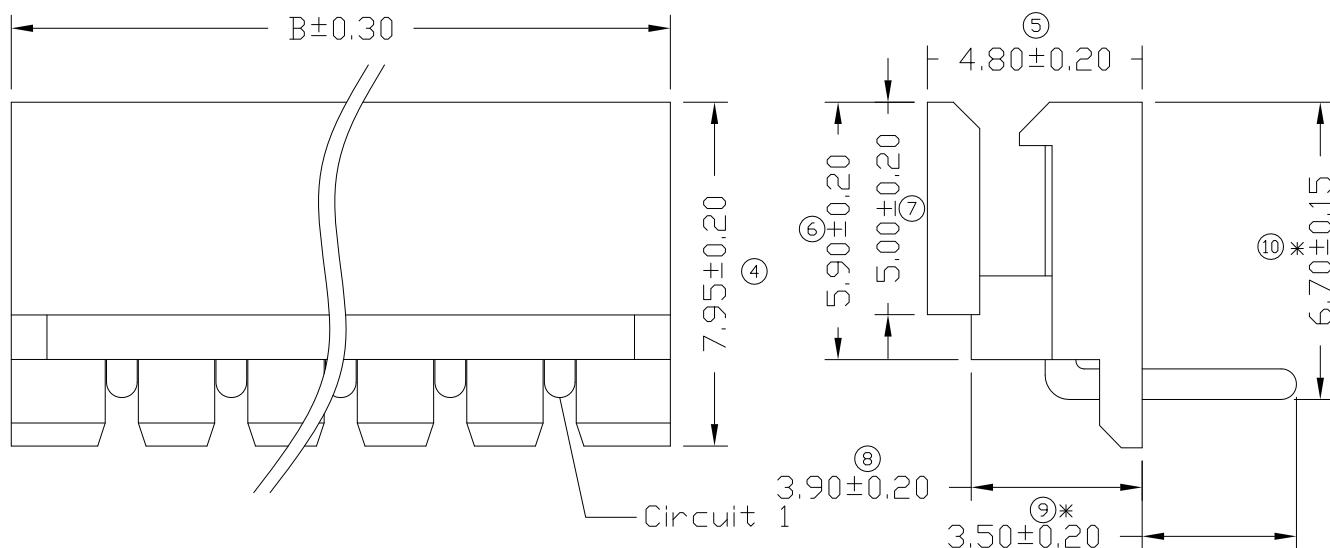
| SYMBOL | REV. | REVISION | APPROVAL | DATE         |
|--------|------|----------|----------|--------------|
|        | A    | 新版圖紙     | Winky    | 2007. 05. 03 |



■ Specifications(规格) :

- Voltage rating(额定电压): 250V AC / DC
- Current rating(额定电流): 3A AC / DC
- Withstanding voltage(耐压值): 1000V AC/minute
- Temperature range(工作温度): -25°C~+85°C
- Insulation resistance(绝缘电阻): ≥1000MΩ
- Contact resistance(接触电阻): ≤20mΩ
- After environmental testing(环境测试后): ≤30mΩ
- Mark " \* " Indicate Dimensions Need to Controlled in QIP. (标"\*"表示重点管控尺寸)

Recommend PCB Layout



DW22 - W D I x xx GLW- x  
① ②③④⑤⑥ ⑦

- ① Series No.
- ② Category: W:wafer
- ③ Welding Board Angle&Way: D:DIP, 90°
- ④ Material: I:PA66 94V-0
- ⑤ Planting Category: 0:Gold Flash 1:3u" 2:5u" 3:10u" 4:15u" 5:30u" 6:50u"
- C:Bright Tin plating 120u"MIN
- M:Matte Tin plating
- H:High Temperature Tin
- A:Ag plating
- ⑥ Row No. -Pin No. : xx: 02P-16P
- ⑦ Color :
- N:本色或普通色
- B:黑色 R:红色 O:橙色 Y:黄色
- G:绿色 E:蓝色 G:灰色 W:白色

| Poles | Dimensions (mm) |       |
|-------|-----------------|-------|
|       | A               | B     |
| 02    | 2.50            | 7.55  |
| 03    | 5.00            | 10.05 |
| 04    | 7.50            | 12.55 |
| 05    | 10.00           | 15.05 |
| 06    | 12.50           | 17.55 |
| 07    | 15.00           | 20.05 |
| 08    | 17.50           | 22.55 |
| 09    | 20.00           | 25.05 |
| 10    | 22.50           | 27.55 |
| 11    | 25.00           | 30.05 |
| 12    | 27.50           | 32.55 |
| 13    | 30.00           | 35.05 |
| 14    | 32.50           | 37.55 |
| 15    | 35.00           | 40.05 |
| 16    | 37.50           | 42.55 |

| DW22-WD I CxxGLW-x | PA66 UL 94V-0 | Brass         | Tin-Plated  | DW22-H             | 1,000Pcs  |
|--------------------|---------------|---------------|-------------|--------------------|-----------|
| PART NO            | Material      | Material(Pin) | Finish(Pin) | Mates With Housing | Q' ty/Bag |

**DST-conn Tech. Co., Ltd.**

|              |                                      |              |          |          |       |              |
|--------------|--------------------------------------|--------------|----------|----------|-------|--------------|
| PART NAME    | 2.5mm Crimp Style connectors         | DRAWING      | Winky    | DWG. No. | DW22  |              |
| PART NO.     | DW22-WD I xxxGLW-x                   | CHECK        | Roy      | REV.     | A     |              |
| UNIT :<br>mm | TOLERANCE UNLESS OTHERWISE SPECIFIED | X. X ±0.30   | APPROVAL | John     | DATE  | 2007. 05. 03 |
|              |                                      | X. XX ±0.20  |          |          | SCALE | PAGE         |
|              |                                      | X. XXX ±0.10 |          | 1:1      |       |              |

COPYRIGHT RESERVED, PLEASE DO NOT COPY.

F E D C B A