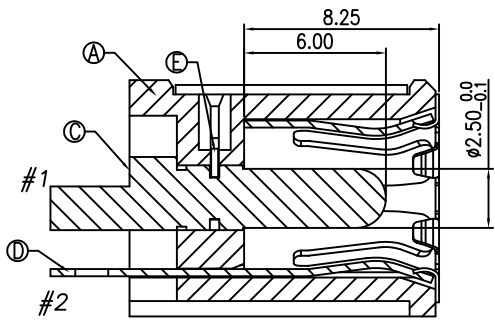
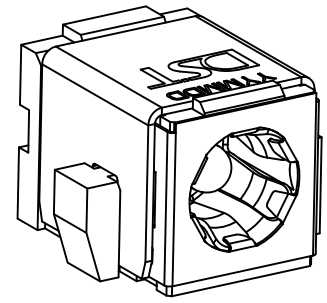
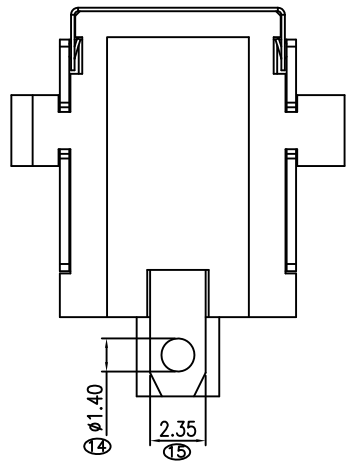
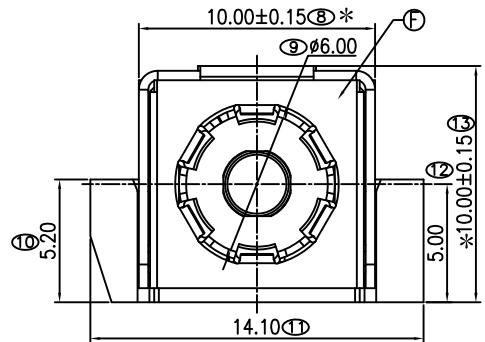
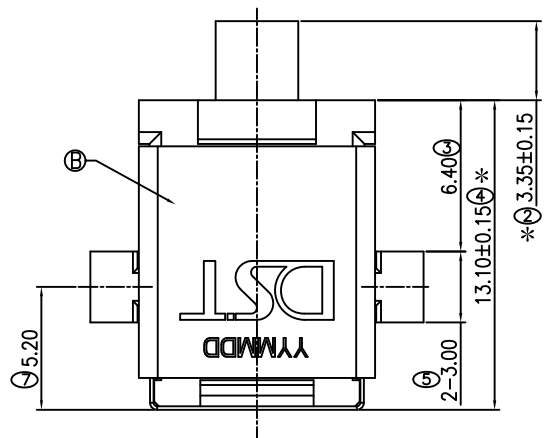


REV.	ECN NO.	DESCRIPTION	DESIGN	DATE
A	XXXXXXX	初版发行	Steven.hu	2011.12.09
B	E-20120315001	增加LOGO	Steven.hu	2012.03.15



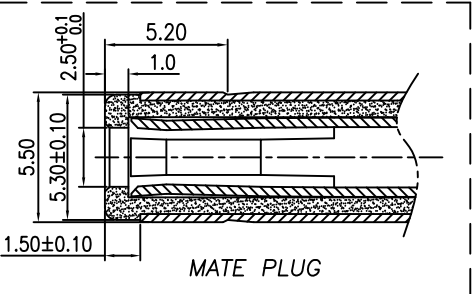
SECTION A-A



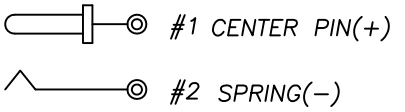
SPECIFICATIONS:

- ELECTRICAL CHARACTERISTICS:
  - RATING: 20V 10A
  - CONTACT RESISTANCE: 30mΩ MAX.(INITIAL)
  - DIELECTRIC WITHSTANDING VOLTAGE: 500V AC FOR ONE MINUTE
  - INSULATION RESISTANCE: 100MΩ MIN. MEASURED BY 500V DC
- MECHANICAL CHARACTERISTICS:
  - INSERTION FORCE : 3.0 Kgf MAX.
  - WITHDRAWAL FORCE : 0.3Kgf MIN.
- LIFE TEST: 5,000 CYCLES MIN.
- PRINTED DATE CODE "YMMDD" ON BOT OF CONNECTOR.

DD: DAY  
MM: MONTH  
YY: YEAR



MATE PLUG



SCHEMATIC

NO.	DESCRIPTION	QTY	MATERIAL	PLATING & COLOR
F	COVER	1	SUS t=0.15	
E	STOPPER	1	SUS t=0.30	
D	TERMINAL SPRING	1	COPPER ALLOY t=0.30	Sn 60u"/Ni 50u"
C	CENTER PIN	1	COPPER ALLOY	GOLD FLASH
B	SHELL	1	SUS t=0.40	
A	HOUSING	1	THERMOPLASTIC	BLACK

UNLESS OTHERWISE SPECIFIED TOLERANCES

**DST**-conn Tech. Co., Ltd.

DECIMALS:		ANGLES:		DWG NO.	PART NAME:
DIM	TOL	DIM	TOL	DESIGN: Steven.hu	DC POWER JACK
X.	±0.50	X.	±2°	1212.03.15	PART NO.
X.X	±0.30	X.X	±1°	CHECK:	ODA10HD250G
X.XX	±0.20	X.XX	—	APPROVED	REV. UNIT: SHEET:
X.XXX	±0.10	X.XXX	—		B mm 1/1