

F

E

D

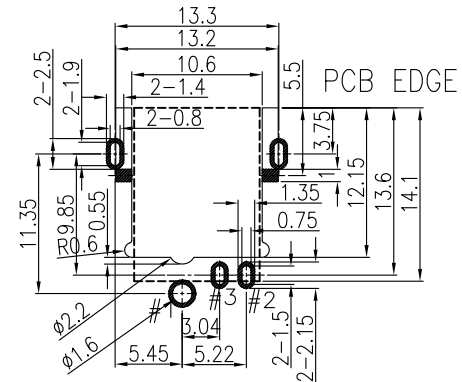
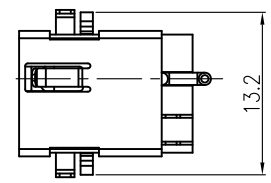
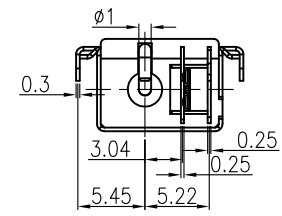
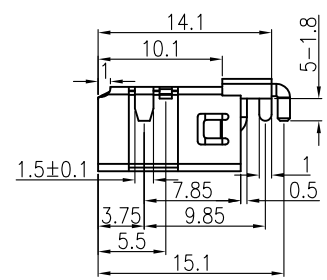
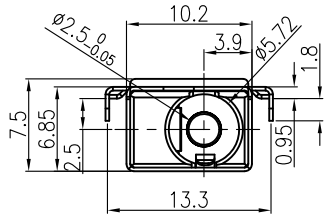
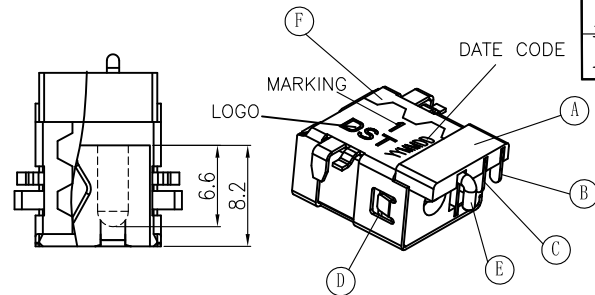
C

B

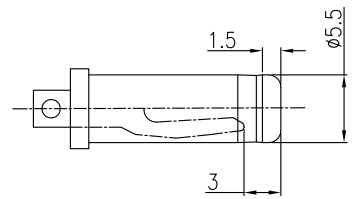
A

RoHS Compliant
Halogen Free

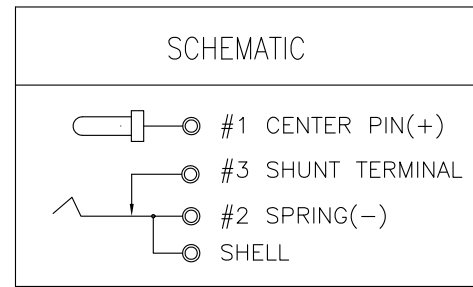
ZONE	SYMBOL	REVISION	APPROVAL	DATE
	△	Add "1" Marking	Winky	17/10/2014



P.C.B LAYOUT

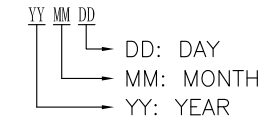


MATING PLUG $\phi 5.50$



SPECIFICATIONS

- ELECTRICAL CHARACTERISTICS:
 - 1-1.RATING: DC 20V 7A
 - 1-2.CONTACT RESISTANCE: 30m Ω MAX(INITAL)
 - 1-3.DIELECTRIC WITHSTANDING VOL TAGE: 500V AC FOR ONE MINUTE
 - 1-4.INSULATION RESISTANCE: 100m Ω MIN,MEASURED BY 500V DC
- MECHANICAL CHARACTERISTICS:
 - 2-1.INSERTION FORCE: 3.0KG MAX
 - 2-2.WITHDRAWAL FORCE: 0.5KG-3.0KG
- LIFE TEST:5,000 CYCLES MIN
- OTHER GENERAL SPEC TO REFER"DC POWER JACK"SPEC
- TO CONFORM TO SINGATRON HAZARDOUS SUBSTANCE FREE SPEC
- GREEN PRODUCT IDENTIFICATION MARK ON JACK: ▲
- GREEN PRODUCT IDENTIFICATION LABEL ON PACKAGING: G.P.PASS
- FOR HAND SOLDERING LEAD FREE PROCESS
- PRINTED DATE CODE" YY MM DD ON TOP OF CONNECTOR



10.Temperature Rise $\leq 30^{\circ}C$

No.	DESCRIPTION	MATERIAL	PLATING
A	BODY	RA230NK(PA6T)	BLACK
B	TIP SPRING	C5210	Ag:20u" Over Ni20u"
C	SHUNT TERMINAL	C2680	Ag:20u" Over Ni20u"
D	STOPPER	SUS	N/A
E	PIN	BRASS	Gold Flash Over Ni50u" Min
F	SHELL	C5210	Ni 60u" Min



PART NAME		DC POWER JACK		DESIGN	Winky	TITLE	
PART NO.		ODA26HA250R		DRAWING	Winky	DWG. NO.	
UNIT:	MATERIAL	TOLERANCE UNLESS OTHERWISE SPECIFIED:	ANGLE	CHECK	Roy	REV.	A
	*	0±0.2 0.0±0.1 0.00±0.05	0°±3°	APPROVAL	John	SHEET	of

F

E

D

C

B

A

F

E

D

C

B

A

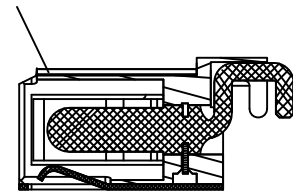
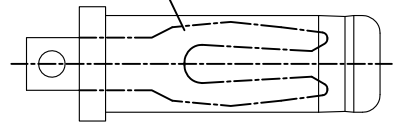
RoHS Compliant
Halogen Free

ZONE	SYMBOL	REVISION	APPROVAL	DATE

1

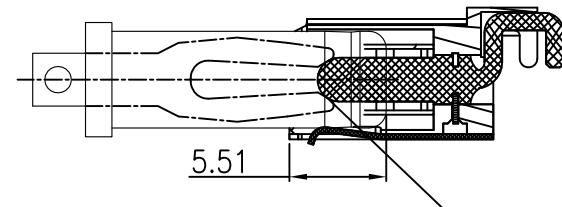
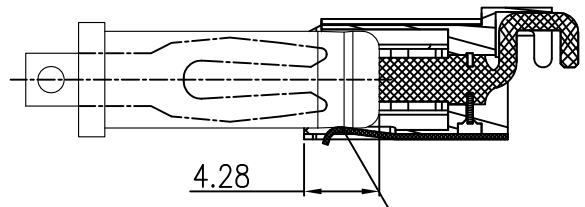
PLUG

DC JACK



1

2

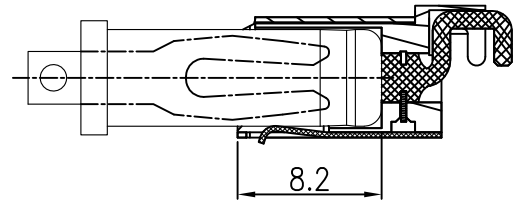


2

THE FIRST CONTACT

THE SECOND CONTACT

3



3

FULL INSERT

4

4



DST-conn Tech. Co., Ltd.

PART NAME		DC POWER JACK			DESIGN	Winky	TITLE		
PART NO.		ODA26HA250R			DRAWING	Winky	DWG. NO.		
UNIT: mm	MATERIAL	TOLERANCE UNLESS OTHERWISE SPECIFIED:	ANGLE	CHECK	Roy	REV.	A		
	*	0.05±x.x 0.00±x.x	0°±3°	APPROVAL	John	SHEET	of		

F

E

D

C

B

A