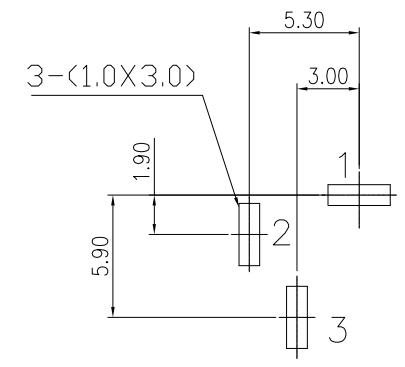
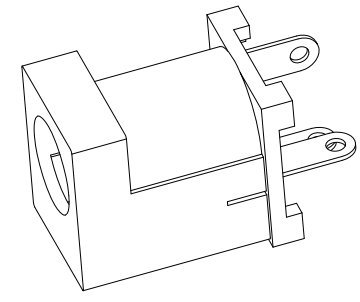


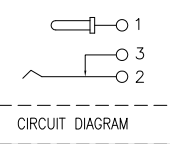
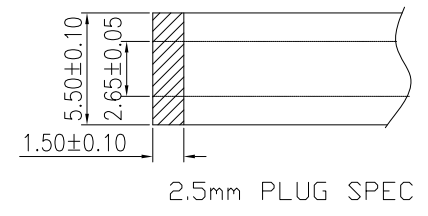
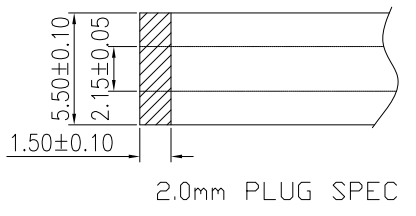
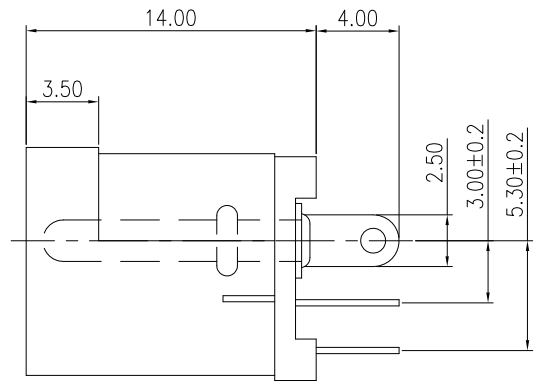
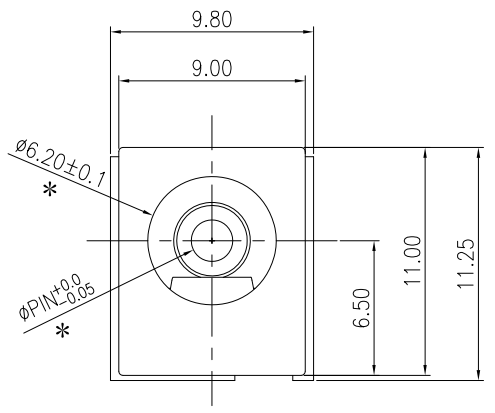
PIN=2.0mm	ODV50HG200G
PIN=2.5mm	ODV50HG250G



PCB LAYOUT TOP VIEW
(TOLERANCE:±0.05)

SPECIFICATIONS:

- ELECTRICAL CHARACTERISTICS:
 - 1-1. RATING: 20V / 6A
 - 1-2. CONTACT RESISTANCE: 30mΩ MAX.(INITIAL)
 - 1-3. DIELECTRIC WITHSTANDING VOLTAGE: 500V AC FOR ONE MINUTE
 - 1-4. INSULATION RESISTANCE: 100MΩ MIN. MEASURED BY 500V DC
- MECHANICAL CHARACTERISTICS:
 - 2-1. INSERTION FORCE : 0.3~3.0 KGF
 - 2-2. WITHDRAWAL FORCE : 0.3~3.0 KGF
- LIFE TEST: 5,000 CYCLES MIN.
- FOR REFLOW SOLDERING LEAD-FREE PROCESS.
- * REPRESENT CRITICAL DIMENSIONS.



NO.	DESCRIPTION	QTY	MATERIAL	PLATING & COLOR
Ⓧ	HOUSING	1	PBT	Black
Ⓧ	COVER	1	PBT	Black
Ⓧ	PIN	1	BRASS	CuSn-Plated
Ⓧ	TERMINAL	1	BRASS t=0.30	CuSn-Plated
Ⓧ	TERMINAL	1	PHOSPHOR BRONZE t=0.30	CuSn-Plated
Ⓧ	TERMINAL	1	BRASS t=0.30	CuSn-Plated

UNLESS OTHERWISE SPECIFIED TOLERANCES

DST-conn Tech. Co., Ltd.

DECIMALS:		ANGLES:		DWG NO.		PART NAME:	
DIM	TOL	DIM	TOL	DESIGN:	Winky	DC POWER JACK	
X.	±0.50	X.	±2°	CHECK:	Roy	PART NO.	
X.X	±0.30	X.X	±1°	APPROVED	John	ODV50HGxxxG	
X.XX	±0.20	X.XX	—			REV.	UNIT: SHEET:
X.XXX	±0.10	X.XXX	—			A	mm 1/1